



# Kitron

Your ambition. Our passion.

## NPI (New Product Introduction) design validation

Kitron offers a comprehensive PCB design rule check using the market leading Valor NPI software, to enable efficient and cost effective product introductions through DFM validation concurrent with the EDA flow.

Valor NPI enables us through attribute driven DFM checks to minimize design revision spins, improve time to market, reduce design cost, optimize product cost and quality, and detect manufacturing risks earlier in the EDA process than normally possible.

### Key benefits

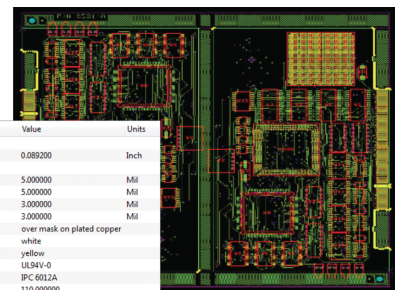
- ▶ Enables concurrent DFM optimization in design
- ▶ Delivers leading DFM technology for minimum design-revision spins in NPI and ramp-to-volume
- ▶ Provides final generation and validation of the PCBA product-model for manufacturing
- ▶ Supports PCB fabrication, assembly and test
- ▶ Facilitates an integrated NPI flow from designer's desktop into process preparation
- ▶ Utilizes the ODB++ intelligent data format to optimize data exchange between design, fabrication, assembly and test.

The following services are available:

### Available DFM Checks in

- ▶ Fiducial analysis
- ▶ Component analysis
- ▶ Padstack analysis
- ▶ Testpoint analysis
- ▶ Solderpaste analysis
- ▶ Netlist analysis
- ▶ RTechnical report and interactive share list with all details and severity rankings.

Product Summary section -> Attribute	Value	Units
Board Requirements		
Board Thickness	0.089200	Inch
Additional Requirements		
Board Outline Tolerance Plus	5.000000	Mil
Board Outline Tolerance Minus	5.000000	Mil
Board Thickness Tol Plus	3.000000	Mil
Board Thickness Tol Minus	3.000000	Mil
Board Thickness Type	over mask on plated copper	
Bottom Legend Color	white	
Bottom Soldermask Color	yellow	
Flammability Rating Standard	UL94V-0	
General PCB Standard	IPC 6012A	
Glass Transition Temperature (Tg)	110.000000	
Legend Sides	Both	
PCB Acceptability Standard	IPC 6012A	
Peelable Mask Side	none	
Plated Edge	Yes	
Plated Slots	No	
Qualification and Performance Standard		
Soldermask Sides	Both	
Top Legend Color	white	
Top Soldermask Color	green	



### Preferred data formats

- ▶ ODB++ generated as full, complete fabrication and assembly data (mandatory)
- ▶ PCB specification (optional)
- ▶ Bill of material (optional)